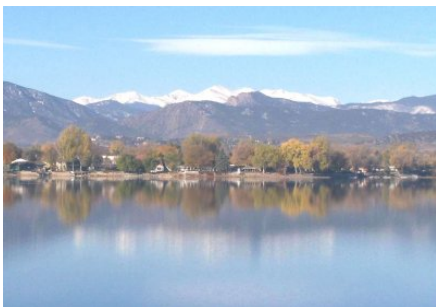


## Social Committee

Ok ladies, now is the time to start thinking about who you might like to be stuck in a car with for a couple of hours. No, not a road trip! A good old fashion scavenger hunt! The Social Committee is planning a Loveland scavenger hunt in April for all Philo members. And don't worry, we won't make you do anything embarrassing or go knock on anybody's door. You will be competing to collect objects and clues from various locations around our great city....maybe you'll even discover something you didn't know was here! The scavenger hunt will have all teams ending at the same location where those who would like to stay and have lunch with everyone. Teams will be made up of 4 people to a car, and if you would like to come up with your own team "theme" it will just add to the fun! The exact date and more details will be given at the March general meeting. Teams will need to sign-up and let us know whether they intend to stay for lunch so we can make reservations. A prize will be awarded to the winning team!



Shannon Voggesser  
Social Committee



## Blood Drive Committee

Our February 15<sup>th</sup> Blood Drive was another big success! We had 99 community members come to donate and from that Bonfils was able to collect 90 units of blood. Thank you to all of our members who gave blood, worked a shift or brought refreshments. All of you gave a wonderful Valentine gift that will save a life. A big thank you also goes to the First United Methodist Church for opening their facility for us to use and to Rowe's flowers for the beautiful bouquets to decorate our tables. Our next blood drive is April 19<sup>th</sup> so mark your calendars.



Deb Fillion  
Chairwoman, Blood Drive Committee  
Stephanie Bradley and Heather Morrison  
Co-Chairwomen

# Mark Your Calendar!

6:00 PM March 8

The church will be open so committees can meet.

This Month's General Meeting

7:00 PM Tuesday, March 8

Trinity Lutheran Church

Blood Drive

April 19

## Message from the President



Philo women are the best! On a cold snowy evening we celebrated Philo's birthday with ice cream Sundays and a room full of princesses with crowns, boas and magic wands. We all have the magic wands of encouragement and working together to help make Loveland a better community. Can it get any better than that?

A highlight of the evening was the two previous scholarship winners who spoke with emotion about the impact the scholarships had on their lives and the lives of their children. How wonderful to hear of the difference Philo is making in the lives of the women and the lasting effect it has on our community. It makes the success of the golf tournament even more important.

The Duck Race ticket sales is under way. You should have received your tickets, 5 to sell or buy. It is important to turn in money or unsold tickets. This fundraiser provides funds to run Philo. If you have not received your tickets please see Michaele Gillette.

Potential new members will be announced at the March meeting. We have several women who have participated as prospective new members but we can also take in additional women. Please send me their contact information as soon as possible and invite them to attend a meeting.

Committee sign up for the 2011-2012 year began at the February meeting and will continue at the March and April meetings. You are responsible for working on three committees. Please step up to chair a committee!

The Board is looking for a Recording Secretary, Corresponding Secretary and Vice President.

Respectfully,  
Marthann Dahlen  
President

## Duck Race Committee



Tickets were given to all members who attended the February meeting and will be available again at the March meeting. Please turn in the money and ticket stubs as soon as possible. Thank you to all of you who have already done so. All unsold tickets must be returned as the Loveland Rotary Club needs a detailed list of all tickets. The



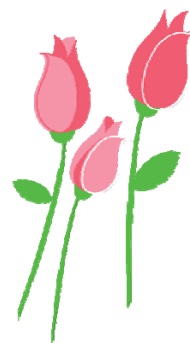
Rotary Club uses their proceeds to purchase hardcover dictionaries for each third grader in the Thompson School District. Each \$5.00 ticket sold by Philo members gives us a \$3.00 profit to be used for our projects. **YOU COULD BE A LUCKY WINNER!** Our own Diane Dynes won an Apple iPad last year!

Here is a list of prizes for this year's Aug. 27th Duck Race:

1st Place \$1,000  
2nd Place an Apple iPad  
3rd Place Xbox with Kinect  
4th Place Nook Reader  
(\$3,000 in prizes all together)

Please make checks payable to Philo. If you need additional tickets, please contact me at 667-6256.

Thank you all!  
Michaele Gillette, Chairwoman Duck Race  
Committee



The Spring  
Appreciation Social  
Committee will be  
meeting at 6:00 p.m. on  
March 8th before the  
general meeting.

## Newsletter Info!!

The news comes from you, the members and committees, so stay in touch! Email Juanita Cisneros at [juanita@lpbroadband.net](mailto:juanita@lpbroadband.net) with your articles.



Philo Newsletter Calendar:

<u>Month</u>	<u>Content Deadline</u>
April	March 26
May	April 23

## GOLF COMMITTEE

Things are in full swing with the golf tournament committee. Sponsor letters have been mailed, forms have been updated and we are “chipping” away at identifying potential new sponsors. We have even “eagled” with early commitments and checks from three sponsors. However, we still have a long way to go **AND YOUR HELP IS NEEDED!**



Most of you may know that Philo sponsored the first golf tournament five years ago. **The main purpose was and still is to raise money to fund the scholarship program.** Our net proceeds over the last five years have **totaled \$68,054**. To date, we have **awarded 45 need-based** vocational or technical scholarships.

We are making a positive impact on the lives of many Loveland/Berthoud residents who – through further education - are striving to make a better life for themselves and their families. This is why **ALL PHILO MEMBERS** – active and honorary – are needed and expected to help in these major efforts.

Obtaining Sponsorships is the primary way we make money from the tournament. Obtaining Prize Donations is a primary draw for

participation of the women golfers. Both are vital to the overall success of the tournament. **WE NEED YOUR COMMITMENT AND ACTIVE PARTICIPATION TO OBTAIN SPONSORS AND PRIZE DONATIONS NOW!!**

With the size of the Philo membership, if each person secured 2-3 sponsors or prize donations, the success rate would be great and the burden on a few members would be significantly reduced. The Sponsor and Prize Committee have a process in place – forms, suggested talking points, and contact information are all available for your use.

At the February meeting, we heard testimonials from two of our scholarship recipients. At the March meeting, we will be showing a video of the interviews of four scholarship recipients explaining the importance of the Philo scholarships. All members will then be asked to sign up to work on the Sponsors and Prize donations.

This is where your efforts are needed the most. This is where you can make the most impact! All for a great cause – helping others help themselves.

See you March 8<sup>th</sup>.

### PHILO GOLF TOURNAMENT ITEMS --

Philo Cookbooks	\$ 5.00
Picnic Blankets	\$ 5.00
Golf Umbrellas	\$20.00
Note Cards by Lola	\$10.00

Mugs are all gone.....Hurray!

All money goes directly to the scholarship fund. The sooner the items are gone, the sooner you won't have to read this article again!

Diane Dynes, Chairwoman, Philo Golf Tournament Committee  
663-9096



# March Birthdays



Joan Putlack	6	Dottie Childers	18
Sheila Pottoroff	8	Mary Schacht	19
Helen Wilson	12	Shirley Lampshire	24
Dee Valdez	16	Georgia Torson	24
Bev pope	16	Karen Sanders	26
Jan Dougherty	17	Joyce Caufman	31

## Presenting the Philo Board of Officers for 2010-2011

<b>President</b>	Marthann Dahlen	669-2537	<a href="mailto:marthanned@gmail.com">marthanned@gmail.com</a>
<b>Vice President</b>	Juanita Cisneros	663-3642	<a href="mailto:Juanita@lpbroadband.net">Juanita@lpbroadband.net</a>
<b>Treasurer</b>	Peggy Pellizzari	669-8744	<a href="mailto:peggy_loveland@comcast.net">peggy_loveland@comcast.net</a>
<b>Corresponding Sec.</b>	Linda Stangel	443-1328	<a href="mailto:LindaStangel@gmail.com">LindaStangel@gmail.com</a>
<b>Recording Secretary</b>	Karen Sanders	667-3937	<a href="mailto:dsan513551@msn.com">dsan513551@msn.com</a>
<b>Historian</b>	Cindy Kurtz	667-9092	<a href="mailto:ckurtz@thegroupinc.com">ckurtz@thegroupinc.com</a>

### Newsletter Editor

#### Layout and Publishing:

Nita L. Starr  
[starn@aol.com](mailto:starn@aol.com)  
 667-1056

### Co-Editor

#### Content:

Juanita Cisneros  
[Juanita@lpbroadband.net](mailto:Juanita@lpbroadband.net)  
 663-3642

#### Circulation:

Phyllis Polucha  
[Phyllis.polucha@comcast.net](mailto:Phyllis.polucha@comcast.net)  
 663-1834