

April 2016

VOL 19 – ISSUE 7

Integrated Early Childhood

At the April 18th teachers' meeting Integrated Early Childhood committee members will present Thompson Valley Early Childhood teachers with 20 Lakeshore Learning career costumes and hats and 5 chef outfits sewn by Phyllis Polucha. Members also will present the 26 felt storyboard kits they made for the books,



“Very Hungry Caterpillar”, “Dog’s Colorful Day”, “Brown Bear, Brown Bear”, and “Chicka Chicka 123”.

Susan Kuhn, Chairwoman
Integrated Early
Childhood Committee



Mark Your Calendar!

April General Meeting
7:00 PM Tuesday, April 12

Trinity Lutheran Church

Church will be open at 6 for committee meetings

Blood Drive

April 19, 9:00 AM – 1:00 PM

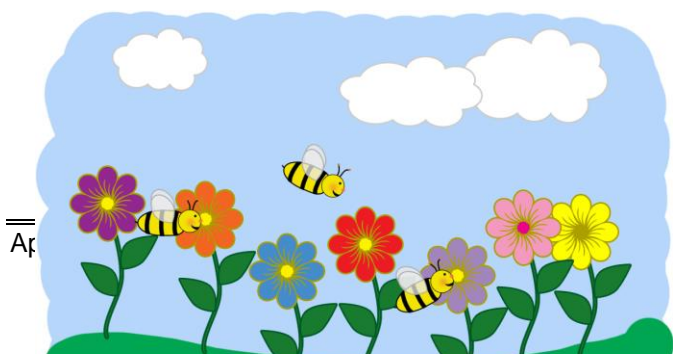
First United Methodist Church

Spring Social

May 10

5:30 Cocktails, Dinner at 6:30

The Garden Room





Message from the President

This is the time of year when we are usually preparing to accept a number of new members to Philo. If you have a friend who might be interested in joining our organization, please contact Cindy Kurtz or myself as soon as possible so we can assist you and your prospective member.

I hope everyone was able to take care of signing up for next years' committee work and picked something that speaks to their interests and talents. We have many options and do a lot for our community. Now we are gearing up for the Golf Tournament. Don't forget to find a way to assist with this event. This is the primary way we earn funds for our Scholarships each year.

I know you all will enjoy the next article (Historian Committee) and picture. It is an example of the long-standing impact we have had on our community as Philo members. It is fun to see the current article about the work Early Childhood is doing (page 1) and then see the work from the past. Also in this newsletter is continued information about our Blood Bank work and how it impacts people.

Finally, I know everyone was excited to hear the report from the Dine Out With Heart committee last month of the number of organizations we were able to support through our fund-raiser. If you were unable to attend the meeting, I have attached a copy of the budget report they presented at the end of the newsletter.

Congratulations on all your hard work. Get ready to celebrate at our Spring Social.

Best Regards,
Nita Starr

From the Historian Committee

Linda Stangel and Sara Quale will accept your yearbooks, news clippings, programs, photos, and other memorabilia at any Philo meeting.

The following is an excerpt from an article in the *Reporter-Herald*, April, 1998:

Dolls place Loveland's focus on kids—

Volunteers planned to hang cardboard-cutout dolls in Loveland offices and businesses today to encourage people to make their community a better place to raise children.

The dolls, decorated by children at preschools and day-care centers, are part of the 1998 Doll Project, sponsored by the Colorado Children's Campaign....

"We're going to be taking them all over Loveland to businesses, schools and doctor's offices", said Vicki Anderson, president of Loveland's Philomatheon Club.

Club members volunteered to distribute 300 dolls. The service organization for women is focusing its philanthropic efforts this year on Loveland's Early Integrated Childhood Centers....

The Historian Committee,
Linda Stangel and Sara Quale



Stevie Benkendorf shows off two of the Head Start dolls.

Newsletter Info!!



Stay in touch! Send articles to me as a word document, or simply in the body of an email. Send to juanitalv1@icloud.com

Please call if you have any questions.
Juanita Cisneros 663-3642

Philo Newsletter Calendar:

Month

May

Content Deadline

April 23

Sunshine Committee Report



Condolence card - Diane Bakel's mother-in-law passed away February 24th.

Philo women thanks for being healthy! Have a wonderful April.

Marthann Dahlen, Chairwoman
Sunshine Committee



Rotary Duck Race Tickets

Spring Social Appreciation Dinner May 10th 5:30 pm at the Garden Room

Dress in your black and white, add lots of beads, bangles and bling, then join in a dazzling fun filled evening!

At the April 12th general meeting you will be able to pick up your formal invitation and make your \$35 dinner payment. Invitations not picked up will be mailed.

We are planning on a great turn out, this is one you don't want to miss!

Judy Grommon Chairwoman
Spring Social Committee

Thanks to everyone who purchased duck race tickets at the March meeting or sent in checks! Sales continue at the April general meeting.

We will have a drawing for MINI prizes - wrapped by Kay - after the meeting. To be eligible to win you must have purchased your tickets at the March or April meeting. March names are already in the drawing. You **MUST** be present to win.

Isn't this just ducky?!

All checks should be made out to Philo.

Questions - Betty Brammer - 970-412-0465
Kay Robinson - 970-667-0993

Betty Brammer, Chairwoman, Rotary Duck Race Ticket Sales Committee



Philo Blood Drive Group

During the past Blood Drive on February 23rd we had 30 potential donors and received 24 units of blood, which is 7.5 donors per hour. We feel that the change to just four hours has been a positive change.

Thank you all for your support!

Blood Drive Co-Chairs
Jan and Florence



From left: Wes Wilson (Philo Scholarship recipient and sometimes blood donor), Angela Wilson (Wes's mother and Blood donor including to Melinda), Melinda Koslow Peterson (who spoke at our February Philo meeting about the emergency that required her receiving 54 pints of blood including some from our drive), Christina DiGiallonardo (Garth Englund Blood Center staff), FlorenceDoksansky and Jan Dougherty (chair).

Presenting the Philo Board of Officers for 2015-2016

President	Nita Starr	217-0226	starnova@aol.com
Vice President	Cindy Kurtz	667-9092	ckurtz@thegroupinc.com
Treasurer	Shellie Gutierrez	776-6961	szebra@comcast.net
Corresponding Sec.	Sue Lussenhop	481-0453	lussenhop5@comcast.net
Recording Secretary	Dianna Boehner	593-0801	diboe2@msn.com
Past President	Judy Grommon	689-1451	jujukay43@yahoo.com

Newsletter

Layout:

Nita L. Starr
starnova@aol.com
667-1056

Content:

Juanita Cisneros
juanitalvl@icloud.com
663-6342

Circulation:

Phyllis Polucha
Phyllis.polucha@comcast.net
481-8509