

August 2017

VOL 21 – ISSUE 1



## **\$\$ DUES ARE DUE \$\$**

Here's a reminder that according to Philo bylaws, the annual dues are to be paid in September and no later than the November meeting.

Please remember to bring your payment to the September meeting.

Make your check payable to Philo. Active member dues remain at \$35 and Honorary member dues at \$15.

If you prefer, you can drop a check in the mail.

Mailing address is:

Mary Starck  
1906 State Highway 60  
Loveland, CO 80537

Members who have achieved Emeritus status (35+ years in the organization) are not required to pay any dues but donations are always welcome and greatly appreciated.

Mary Starck, Philo Treasurer

## Share Your News

For future reference, here are the deadlines for submitting content for the monthly newsletters. Stay in touch! Send articles to me as a Word document, or simply in the body of an email.

Send to [juanita@lpbroadband.net](mailto:juanita@lpbroadband.net)

Please call if you have any questions.  
Juanita Cisneros 970-663-3642

<u>Month</u>	<u>Content Deadline</u>
September	August 19
October	September 23
November	October 21
January	December 9
February	January 20
March	February 17
April	March 24
May	April 21



# message from our



Philo members:

It is with great pleasure that I step forward to lead the Philo organization for the 2017-2018 year.

I think it will be a special year for many reasons. First and foremost, it is because of the wonderful members of the organization that constantly step up to make a difference in the community. Secondly, it is because we are part of a great organization that started close to a century ago with a handful of young girls and their mothers when they made a difference with a few baskets of food for needy families.

One hundred years later, we continue to make a difference with many more programs that reach out to those in need. We do this with countless hours of volunteer time, some personal financial donations, and hearts that truly want to make a difference and help those who are in a position to need our assistance.

Although we are not a social organization but a service organization we still have lots of fun times together. It is really fun to serve on committees and get to know each other better during the times we work on our projects.

We also have Bunco, Book Club, Spring Social and the Christmas party that are all social gatherings.

Let me know of ways you think we can make a difference. It might be something small or a vision of something grand. We will work together as Philo members have for decades to be sisters and to make a difference!

*"The world is full of good people. If you can't find one, be one." Mother Teresa*

Let's have a great year!

Miki Roth

Philo President 2017-2018



## **Dine Out With Heart 2017 is coming October 1 – 14!**

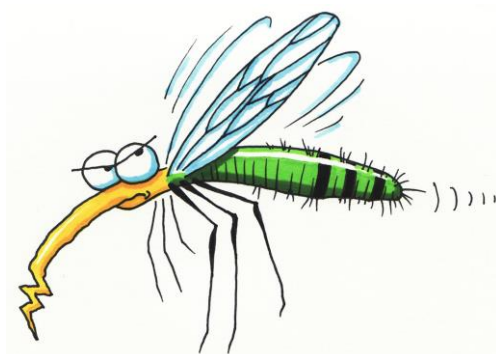
The DOWH committee has been working this summer to set the stage for another successful fundraiser to help fight hunger in the Loveland area. We had the great opportunity to meet with Loveland Chamber of Commerce president, Mindy McCloughan and Business Membership Director, Dixie Daly who provided us with a wealth of great suggestions for the event's continued growth and success. The Chamber will also be assisting us with our advertising and promotion.

We are excited that Rob Smith, of SolvvAgency, will again invest his time and expertise to develop our promotional materials. His creative insight takes the event's public image to a very professional level!

The participating establishment tally is currently at 22, with a few pending confirmations. This list includes several new participants who have given us some great feedback on how they'd like to make the event work best for their patrons.

Don't miss the September Philo meeting...we'll be ready to share our plans, the final restaurant list, and let you know how you can help support Dine Out With Heart!

**STARVE A MOSQUITO!**  
**DONATE BLOOD AND SAVE A LIFE**



**PHILO BLOOD DRIVE**  
**Tuesday, Aug. 22**  
**9am - 1pm**  
**First United Methodist Church**  
**533 Grant St.**  
**Loveland**

## **Advantages of Loveland Chamber of Commerce Membership**

Philo is a member of the Loveland Chamber of Commerce. With this membership comes many benefits.

**Take advantage of The Chamber Community Calendar**

### **To submit events:**

Go to Loveland Chamber of Commerce [home page](#)

Click on the Chamber logo

On the left side bar click "calendar"

Enter your information

Click "submit". The grey box is very lightly colored but it does work!

The Chamber will review the item before final submission.

Questions: Contact Kathy Loken

[kloken@comcast.net](mailto:kloken@comcast.net)

970-227-6823 (cell)



