

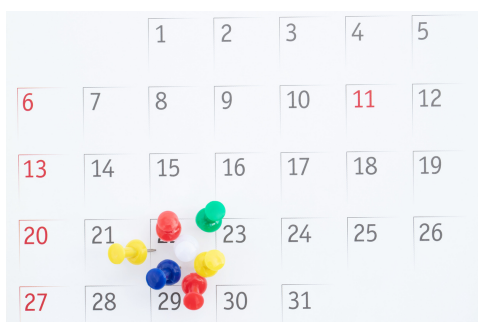
Philo News

MARK YOUR CALENDAR

General Meeting
January 10 @ 7 p.m.
Trinity Lutheran Church
3333 Duffield Ave.
Loveland, CO
 Facility will open at 6 p.m. for
 committee meetings.

Hostesses for the **January meeting**:
 Peg Isakson, Judy Grommon, Mary Starck

Hostesses for the **February meeting**:
 Florence Doksansky, Linda Stangel, Carol Rieser



SHARE YOUR NEWS!

For future reference, here are the deadlines for submitting content to the monthly newsletters.

MONTH	CONTENT DEADLINE
February	January 21
March	February 18
April	March 18
May	April 22

Send to philopublicity@gmail.com;
 Call Amy Black at 970-412-0250 with
 any questions.



Officers

President:	Judy Gangle - jjgangle@yahoo.com
Vice President:	Carol Rieser - rieser.2529@comcast.net
Corresponding:	Florence Doksansky - fdoksansky44@gmail.com
Secretary:	Ruth Swanty - ruthswanty@gmail.com
Treasurer:	Peggy Pellizzari - peggy_loveland@comcast.net
Past President:	Mary Starck - starckm@msn.com

President's Message



Although I am writing this before Christmas, you won't receive it until after, but I wish you all a Merry Christmas and/or a Happy Hanukkah! We lost several dear members of Philo this year and as we move into the new year let us remember their spirit of giving and friendship to carry on our mission.

It seems our Philo year has just started, but we already need to look to our 2023/2024 year. It will be March before we know it, and we will need to present the roster of new officers prior to voting in April. If any of you are interested in serving on the Board, please notify one of the current Board members. Thankfully, Peggy Pellizzari will remain as treasurer. Also, Committee sign ups will occur in March. There are multiple chairpersons that have served in that position for several years, they need a break. Please be willing to step up to the plate and become a chairperson or co-chair. Ask the current chairperson to stay on the committee and help you. Most plan to anyway.

As many of you know, Mary Stark is on a leave of absence for medical reasons. We wish her a speedy recovery and a thank you to Rita Harden for stepping in for her.

Again, wishing you many blessings this holiday season.

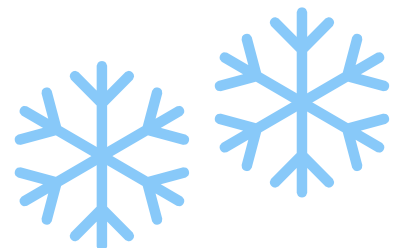
Judy

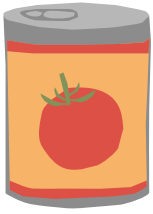
Member Spotlight, Honorary

Joyce Krantz

Joyce moved to Loveland in 1976 with her husband who was a physician. She worked in Business Administration and then sold Residential Real Estate. She has been a member of Philo since 1997 when she was invited by then President Vicky Anderson. Joyce has served on most committees, but especially loved the Golf Tournament. Canned Food Drive, Integrated Early Childhood, and Alternatives to Violence were also favorites. She was President of Philo 2003/2004.

Joyce has one son who is currently traveling in Europe.





Holiday Giving

Formerly Canned Food Drive & Christmas Food Baskets



On December 1st and 2nd, 14,143 lbs of much needed food was delivered to the House of Neighborly Services. With higher food prices and a lot going on at each of the schools these days, this is an amazing donation.

A story to share with you from Truscott:

We only have about 7 full boxes. Not near as much as we had hoped, but I think it is a tough time for families and many are just trying to keep food on their own tables. We actually had several kids ask if they could take some home. Staff brought in food and we allowed the kids to "buy" a can with their Tiger Tickets which they usually use to "buy" rewards and many kids did that. It was a way for them to give back even if their family could not help.

The four members of the Exodus staff that assisted us were absolutely amazing, and we loaded and unloaded the truck in record time! At multiple schools, the kids enthusiastically moved boxes and helped us get everything in the truck. The staff at all of the schools were incredibly helpful, and several missionaries met us at HNS to help palletize the boxes.





Holiday Giving, continued

A big thank you to the committee: Karen Vinal, Janice Marshman, Kris Martin, Nicole Jernigan, Carol Watt, Debbie Riley, and Susan Trumbo. This would not have been successful without you!

I also delivered a full box of toys to the Christmas Store, and \$1,900 of gift cards to the Christmas Basket program. HNS was so grateful - they were already running low on holiday meal supplies and the gift cards were very much appreciated. Susan also organized several people to help deliver boxes to homebound seniors.

As we move into 2023, our committee will continue to look for ways to support HNS and our community during the holiday season. I hope to see lots of you on the committee for next year!

Hope your holidays are Merry and Bright!
Brienne Smith, Chair

Golf Tournament

The Golf Committee **will meet at 6:00 pm** prior to the regular Philo meeting on **Tuesday, January 10th**. Please Confirm with Beth if you will be there, email philogolf@gmail.com.



Integrated Early Childhood

Once again, I am overwhelmed by the generosity shared by the Philo membership. Over 65 books were collected at the holiday party and delivered to the preschool staff the next morning at their holiday function. Hershey kisses were placed on the tables and in addition to the donation of books, several members donated hats, clothing and a big thank you to Florence whose friend donated handmade hats and headbands. In November, 90 play costumes were delivered. Kris Martin shows off the handiwork of Marcia Hale. Our next project will be the purchase of a book for each classroom as selected by the teacher from a list of four. We hope the teachers will share these books within their buildings to substantially increase their resources. The committee decided on this in lieu of individual holiday gifts as the staff has grown so large.

Debbie Riley, Chair



Philo Website Update



Perhaps you've been missing a Philo Handbook, a Philo Membership Directory, a Committee Roster, a Sunshine Team list?

Yes, it has taken some time, but building and editing a new Philo Members Only (PMO) website section has been happening behind the scenes.

The "build" of our current WIX public-facing section has been constructed by Jamie Powell. Drum-roll for Jamie, please!! If you have committee information for public viewing on www.philoloveland.org, please email the content to philopublicity@gmail.com.

The "build" of a WordPress section for Philo Members Only (PMO) has been constructed by Julie Seat of Longs Peak Web Design. This members-only section will be reviewed by the Philo Executive Board on January 3rd and will go "live" to members on January 6th.

Before January 6th you will receive a Mass Email giving you the username and password to use PMO. The same username and password will be used by all members. (Hint: it will be a variation of Pink and Lavender, which we have been using.)

When you or your committee has information to be placed on the Philo Members Only section, you would send it to your Board liaison and/or to pegisaksonphilo@gmail.com.

Watch for the email invitation to the new website. It will have more detail and be sent to you the first week in January.

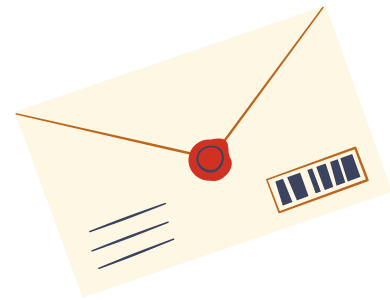
Website Maintenance Committee:

Peg Isakson

Diane McInturff

Peggy Pellizzari

From Corresponding Secretary Florence Doksansky



Philo has received several thank you notes from our fund raiser to help the hungry in Loveland.

Two were received from Alternatives To Violence:

In a letter Kari Clark of ATV writes “...Your generous gift of \$2,500 on 10/25/22 will soon be hard at work, helping us provide advocacy and safety to victims of violence. Your support, along with our generous, caring community, will enable us to service more victims who are seeking safe shelter, advocacy and resources....”

In a note from Kari:

“Dear Philo Members,

Once again you amaze us with your generosity! Thank you so much for the donation from Dine Out with a Heart. As I write this, our office manager is purchasing grocery gift cards that will be used to give to clients leaving shelter and/or their abusive homes for food to stock up their new homes.

In gratitude,

Kari, the staff and clients of ATV”

Three thank yous were received from the Thompson Education Foundation:

Two thank you post cards.

One noting - “Thank you so much for your support to the Resiliency Fund!”

The other a letter:

“Dear Dine out with Heart Committee,

I am pleased to accept your gift on behalf of the Thompson Education Foundation. Thank you for your donation of \$3,500 dated 10/18/22 in support of the Resiliency Fund for Unhoused Youth...

Sincerely, Kim Akeley-Charron, Executive Director”

Additionally a thank you note was received from KidsPak

“Greetings from KidsPak – Happy Holidays!

Officers and Members of Philo

KidsPak is very appreciative of the significant grant to purchase food for the Thompson students.

This past week over 650 food bags went to 41 sites in the district. Thank you for fighting hunger in our schools.

Thank you for sharing your resources.

Tom Carrigan, President”

Minutes from November Meeting

PHILO GENERAL MEETING – NOVEMBER 8, 2022 – TRINITY LUTHERAN CHURCH LVND, CO

Meeting was called to order at 7pm by President Judy Gangle.

Hostesses Beth Sonderquist, Jan Lanting, and Lynn Hendrickson were thanked.

Committee spotlight this month was Holiday Giving presented by Brianne Smith the Committee chair. Brianne explained that the Canned Food Drive and Christmas Basket committees were now combined as one committee titled "Holiday Giving". The canned food drive is in process and the list for other help at House of Neighborly Service is the following:

- *Help delivering food to seniors
- *Donation of toys and other gifts to the Christmas Store
- *Donation of Gift Cards form DOWH (underway)
- *Stocking shelves when donated food is delivered

Brianne provided sign up sheets for members to sign up to help. She then went on to give a short overview of House of Neighborly Service and the community members it helps. We played a game similar to Charades with one person holding a list of words and then getting the rest of the team to guess the word without hearing the word but clues instead.

The minutes of October 11, 2022 were accepted by Carol Rieser and seconded by Florence Doksansky.

Treasurer's Report:

General Fund	\$9,931.92
Dine Out With Heart	\$1,894.91
Golf/Scholarship	\$5215.95/\$17,500
Savings Account	\$14,002.56

OLD BUSINESS:

Tonight was the deadline for Raise Right orders.

Mary Voggessor read the new bylaws that were changed to improve membership rules.

There were a few comments on the removal of the requirement of attending 5 meetings.

A motion to accept the new bylaws was made by Beth Sonderquist and seconded by Gay Ann May. The new bylaws were put to a voice vote and passed.

A motion to make the new bylaws retroactive to Sept. was moved by Beth Soderquist and seconded by Gay Ann May. Mo Riley, was introduced by Florence Doksansky and then gave a thumbnail sketch of herself. She was approved by voice vote by the members as a new member.

The website is still a work in progress. It was announced that the "members only page" should be updated and available by November 18.

NEW BUSINESS:

The Christmas party was announced to take place on December 13, 2022 and to be held at Ruth Swanty's home at 5942 Pronto Way, Loveland, Co. 80538. A mass email will go out to announce this.

COMMITTEE ANNOUNCEMENTS:

Integrated Early Childhood chair, Debbie Riley spoke of the success the committee was having. The making of 72 vests and 13 other costumes for dress-up. They reminded the members that they are looking for pre-school books to be donated at the Christmas party,

Florence Doksansky reminded everyone that the blood drive is on Feb. 14.

Cindy Kurtz of the Sunshine committee announced a date for a social event. The event: War Museum, will be Nov. 17th at 5:30. Everyone plus a guest is invited.

Meeting was called to close by Judy Gangle at 7:40pm.

Respectfully submitted by Ruth Swanty

Blood Drive



ATTENTION; The Blood Drive date has been changed from 2/14/23 to 2/21/23!

If you would like to give, please contact Florence Doksansky at 401-524-0772 or fdoksansky44@gmail.com. There are quite a few slots open and we are open to some walk-ins. Appointments are of course best!

The location is the same – Grace Community church just off 14th St. Time is 9am – 3pm.

Those in need of blood are very grateful for your donations! One pint saves up to 3 lives!



Sunshine



As we head into the season and much joy, I am sad to report that we have lost another one of our beautiful Philo Sisters. Kay Robinson passed away on November 22. Kay always had a wonderful smile on her face and enthusiastically shared the fruits of her labor with her wonderful fruit jams and jellies. Kay had been a member since 1995 and even though she held honorary status she remained very active in our organization. She will be truly missed. Her service will be held on January 4th, which is also her birthday, at 1:00 pm at the First United Presbyterian Church in Loveland.at 400 E. 4th St.

We'd like to take this time to celebrate our sisters that have a birthday in January.

Diane McInturff	2
Phyllis Reimer	6
Nita Starr	8
Amy Black	9
Julie Mahaffy	11
Kathie Lizardi	14
Lin Stokes	13
Diane Meuret	18
Christine Greene	21



Remember that your Sunshine teams are ready to celebrate your joys and help with your woes. Feel free to contact either Cindy Kurtz at 970-962-6832 or ckurtz1962@gmail.com or Amy Black at 970-412-0250 or blackamyb@hotmail.com. Please let us know of any information worthy of a card or help for our members.